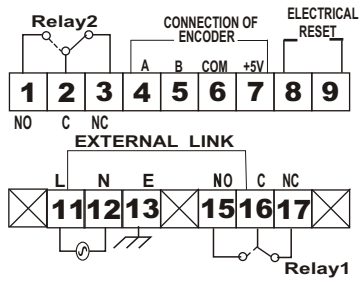
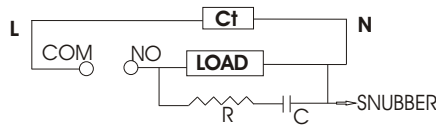


Model : CT 96M2

Sr. No.: _____

**Terminal Connections**

- 1 - NORMALLY OPEN CONTACT OF RELAY2
- 2 - COMMON CONTACT OF RELAY2
- 3 - NORMALLY CLOSED CONTACT OF RELAY2
- 4 - "A" OUTPUT OF ENCODER
- 5 - "B" OUTPUT OF ENCODER
- 6 - COMMON (GROUND)
- 7 - +5V DC SUPPLY FOR ENCODER
- 8 - ELECTRICAL RESET POINT-1
- 9 - ELECTRICAL RESET POINT-2
- 11 - LIVE (PHASE) OF SUPPLY
- 12 - NEUTRAL OF SUPPLY
- 13 - EARTH OF SUPPLY
- 15 - NORMALLY OPEN CONTACT OF RELAY1
- 16 - COMMON CONTACT OF RELAY1
- 17 - NORMALLY CLOSED CONTACT OF RELAY1

CONNECTION FOR LOAD IF IT IS INDUCTIVE

R=56 OHMS / 2 WATT.
C=0.1 MFD / 250 V AC
CT=COUNTER

Trouble Shooting :

- 1) NO COUNTING : PLEASE CHECK CONNECTION OF ENCODER.
- 2) COUNTING IN A REVERSE WAY : CHECK THE CONNECTION OF "A" & "B" INPUT AT TERMINAL.

**If load is inductive,
connect snubber across load**

CT96M2**Features**

- 1) MULTIPLIER USER SELECTABLE
- 2) INDEPENDENT SET POINTS
- 3) INDEPENDENT RELAYS FOR EACH SET POINT
- 4) +VE & -VE RANGE LOCK.
- 5) EXTERNAL / ELECTRICAL RESET.
- 6) DECIMAL POINT ADJUSTABLE
- 7) SETTING WITH SOFT KEYS
- 8) RELAY STATUS INDICATION ON FRONT WITH 3MM LEDs
- 9) FLUSH PANEL MOUNTING IN 96 x 96.

Specifications

- 1) INPUT : ENCODER (A & B)
- 2) +VE SET1 : 0000 TO 2000
- 3) -VE SET2 : 0000 TO -2000
- 4) MULTIPLIER : 0001 TO 0099
- 5) DISPLAY : 0.5 INCH, SEVEN SEG, RED LED DISPLAY WITH -VE SIGN INDICATION.
- 6) RELAY : 2 RELAYS, 5 AMP FOR RESISTIVE LOAD
- 7) RANGE : LOCKABLE. FACTORY SET (-2000 & 2000)
- 8) MOUNTING : PANEL MOUNTING
- 9) CUT-OUT : 91 x 91 mm.
- 10) POWER CONSUMPTION : 10 VA max.
- 11) SUPPLY : 220 V AC +/- 15% 50 Hz

ION ELECTRICALS
PRIVATE LIMITED
आयन् इलेक्ट्रिकल्स प्रा. लि.



USER GUIDE / Operating manual CT96M2

Check all the connections & Switch on the mains supply.

Display will show last saved count.

How to adjust Set points?

To set +ve set point,

Push "SET1" key, display will start flashing with previous set no. Set it using up or down key to desired value. After setting new value push "set1" key again to go to normal mode & to store changed value.

Note: If no key is pressed in set mode then display will go to normal mode after 3 seconds (in which it shows process count). So to store new value push "set1" key otherwise it will go to normal mode by saving the displayed value.

To set -ve set point,

Push "SET2" key, display will start flashing with previous set no. Set it using up or down key to desired value. After setting new value push "set2" key again to go to normal mode & to store changed value.

Note: If no key is pressed in set mode then display will go to normal mode after 3 seconds (in which it shows process count). So to store new value push "set2" key otherwise it will go to normal mode by saving the displayed value.

How to set multiplier?

Push "down" key, hold it & push "up" key, then release both the keys at a time. "Adj" with some number will start flashing on display. This number is multiplier (settable from 0001 to 0099). Set it using "up" or "down" key. To go out of this mode/normal mode, push "set2" key otherwise it will go automatically to normal mode after three seconds.

E.g : if one has set multiplier as "0005" then the counter will multiply every single pulse by 5. It means that, in normal mode counter will display 000.5 for 1 pulse & 001.0 on second pulse if

"dp1" is selected.

How to adjust decimal point (dp),

Push "down" key, hold it & push "set1" key. Hold both the keys for six seconds & then release both the keys. "dp" with previous set value will start flashing alternately. This is decimal point adjustment. If one has set "dp" to 0000 then count will be displayed without decimal point in normal operating mode. If one has set "dp" as 0001 then count will be displayed as 000.5. For 0002 count will be 00.05, for 0003 count will be 0.005. Set dp by "up" or "down" key.

After setting dp push "set1" key,

"rngh" along with 20.00 will flash simultaneously. This is range high limit. Set it by "up" or "down" key. Here one can set the maximum limit of +ve set point. If one has set "rngl" as 20.00 (factory set value) then the user cant adjust "set1" beyond 20.00. It is basically a lock.

After setting "rngl" push "set1" key,

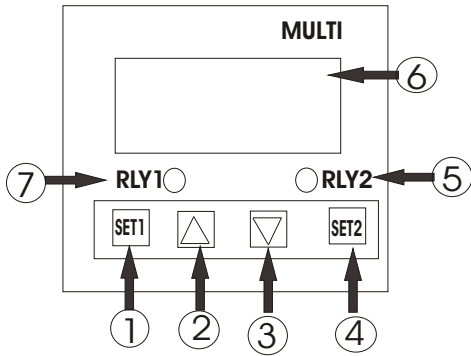
"rngl" along with -20.00 will flash simultaneously. This is range low limit. Set it by "up" or "down" key. Here one can set the minimum limit of -ve set point. If one has set "rngl" as -20.00 (factory set value) then the user cant adjust "set2" below -20.00.

Push "set1" key to go out of this mode (normal mode).

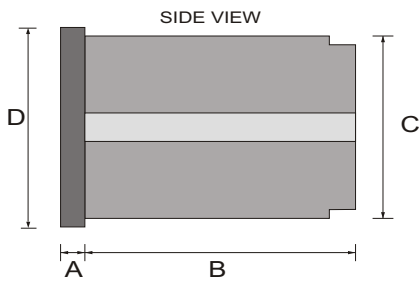
This counter can save last count.

To reset the counter "sfort" reset terminals as shown in connection diagram. It will reset the count to "0000" & switch off the relays.

L



- 1:- SET1 KEY
- 2:- INCREMENT KEY
- 3:- DECREMENT KEY
- 4:- SET2 KEY
- 5:- RELAY2 "ON" INDICATION
- 6:- DISPLAY WINDOW
- 7:- RELAY1 "ON" INDICATION



MODEL	A	B	C	D
CT96M2	12	118	88	96

Model CT	Control Range	Input Sensor
CT 96M2	-20.00 TO 20.00	ENCODER